



**Advent Series—Word Themes**

**Dec 1st : Surprise**

Salvation always comes as a surprise. It is what happens when God does for us what we could never do for ourselves. So when God comes close it is always unimaginable, yet God asks us to expect it.

**Dec 8th : Prepare**

Hope might sound passive, but it's the farthest thing from it. Christian hope won't let you just sit on your hands. There are preparations to be made and road-work to be straightened out because *God is coming*.

**Dec 15th : Expectations**

How do we know when God has come close? What if it's not what we were expecting? Advent asks us to adjust some of our hopes and expectations.

**Dec 22nd : Disruption**

More often than not, when God comes close, it results in a major scandal. Our sensibilities are offended and misunderstandings fly about. When "God is with us" it's likely that public disgrace and secret dismissals will soon follow, because, essentially, when God comes close life gets disrupted.



*Advent*

*Holden Evening Services*

*6:30pm*

*December 4th, 11th,  
and 18th*

**Inside this issue:**

Pastor's Corner	2
Quick Notes	3
Birthdays/Anniversaries	3
Faith In Action	4
Warming Shelter	5
Calendar	6



*Christmas Eve  
Worship*

*5:00pm and 7:00pm*

*Candlelight Services*

The Christmas Story gets hard to pick out among so many spins on it in media and malls. Santa? St. Nicholas, Rudolf, Charlie Brown, Chestnuts roasting....you get the idea.

I am most moved by a view of the Bethlehem Child I first heard years ago by Rev. Dr. John Vannorsdall, one time chaplain at Yale and nationally recognized radio speaker on the Protestant Hour. It is the idea that God, with a right to be indignant with us, if not angry with us, in all our violence as humans, nevertheless, chooses to come among us, revealed as a Child. In turn, this vulnerability spawns a new level of gentleness with compassion in those drawn to Bethlehem's Immanuel.

Garrison Keillor speaks of this gentleness too. It colors the fabric of and permeates our real world lives. In Keillor's words, quoted in 1989:

What keeps our faith cheerful is extreme persistence of gentleness and humor. Gentleness is everywhere in daily life, a sign that faith rules through ordinary things: through cooking and small talk, through storytelling, making love, fishing, tending animals and sweet corn and flowers, through sports, music, and books, raising kids—all the places where the gravy soaks in and grace shines through. Even in a time of elephantine vanity and greed, one never has to look far to see the campfires of gentle people. Lacking any other purpose in life, it would be good enough to live for their sake.

You can still hear Keillor's long running radio broadcast show, A Prairie Home Companion. One hopes he will continue to write and speak. Somehow I think the Manger Child would count him an ally in the healing and wholeness project the Church engages. Mending of the universe, it is our calling and privilege. This Christmas I will be looking to renew my commitment to that for another year.

Good Christmas Cheer with gentleness to you as well!

--pastor jim



# Quick Notes

## Office News

Thanks to everyone for the positive emails and comments on the Notes-N-News weekly emails. Please know that I am checking all our church's email addresses (we have 3!) until we eventually have just one main address. Phone messages are checked daily.

Jennifer Fowler

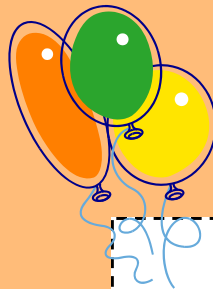
Let everyone know that Mom and Baby are doing great! —Ty and Michele Sibley

November 19, 2013

Piper Lynn Sibley 7lbs 9oz, 20 inches long



Claire Anderson, Betty Dean	3
Dottie Gilbertson	6
Mickey Stubbs	7
Jedrek Matthias	8
Kristen White	11
Arthur Chenoweth	12
Greg Oates	14
David Hancock, Joyce Allen, Lillian Kurahara	15
John Owre	17
George Pantely	20
Jim Anderson	27



## Let's Celebrate !

In the downtime between Christmas and New Years plan to attend a party to celebrate the reality of the Asbury/Our Redeemer Partnership. Fun and sustenance for us all!!!! You can comfortably sit and watch or get into the action.

When - Sunday December 29th at noon

Where - ORLC Fellowship Hall

What - Potluck and More - Carol sing, Musical entertainment, games for the young and young at heart, Raffle, etc.

Who - All of us, plus friends and well wishers



Brian & Gretchen Winans	10
Marv & Ruth Turner	27
George & Sharon Pantely	28
Craig & Kathy Terry	30

## Faith in Action

Our busy committee, with great ideas for outreach, had yet another ambitious meeting in November. We continue to co-ordinate the Food on the Fourth, collection and sorting.

**Each 4th Sunday**, gifts of food or money are donated, and given to our local food bank for distribution. In Hood River, we are fortunate during this holiday season, to have both Rosauer's and Safeway make bags available during our normal grocery shopping. These bags contain groceries over the \$\$ value stated, at least at Rosauer's. Another way to reach out and fill the empty shelves!

Pat Pettit is working on coordinating offering rides to those who need them within our church membership. We will continue to update this plan.

**December 15** is our next designated giving Sunday, highlighting the Warming Shelter, where our monetary gifts with purchase supplies as needs arise. Please support this effort of Ecumenical outreach in our community. See article about the Shelter.

### **Upcoming plans in 2014 are**

- 1] organize a Service Day, with the Food Bank and our congregation.
- 2] Plan a fundraising event for the School Grants program- a Shrove or 'Fat' Tuesday pancake supper in early March!
- 3] Distribute recipes for making at-home cleaning solutions, that have been tried and tested by our committee and families.

**Advent event!** In keeping with our efforts to 'Care for God's Creation' by recycling, and inspired by the ongoing efforts of Craig Terry, the Pantleys, and the Fish Garden people in composting, we are extending the effort by offering recycling for 'hard to recycle' items at this time of so much wasteful packaging. Bins will be provided at the church and information will be handed out. Items such as: block Styrofoam, clear plastic clamshells, empty prescription bottles are among items that will be collected and hauled to Portland by the Terrys and Pantelys. Please direct questions to one of us, or committee members.

We are always open to new ideas to reach out to our community, our world! Consider alternative gifting for those who 'have everything' Give to the Warming Shelter to honor someone you love, or purchase a gift from ELCA SERVE or UMCOR that skips the middle man and gets money to the artist. Alternative gifts to FISH, or your favorite charity may be 'just what they wanted'. Be creative as we anticipate the ADVENT of our Lord and Savior.

Blessings to you this Holy Season. Sharon, Gigi, Vicki, Debby, Linda and Pat.





## **Designated Giving Sunday, December 15**

### **Hood River Warming Shelter**

What is this ‘warming shelter’? We have had some of our coldest temperatures as I write this article, and winter has yet to begin.

Have you had cold hands, feet and no shelter besides a doorway? Many of us have not experienced this, and are fortunate. Our community is not immune to poverty, individuals and families who cannot pay for clothing and/or shelter, and we must acknowledge it exists.

Several years ago, with the help from a grant from Faith Connections via Hood River County, Valley Christian church spearheaded an effort through Gorge Ecumenical Ministries to address this problem.

Providing shelter to persons in need mid November through mid March is the result of hard work and planning. Several area churches volunteer their facility for a week, volunteers are scheduled to be in attendance, a light meal is served, and a warm place to sleep is offered. Shelter hours are 6pm-7am daily.

Gigi has been a volunteer, and can tell you what her experiences have been. Andy Wade trains new volunteer groups and remains active in this effort. Needs are ongoing, cannot be denied, and congregational support of this program is a way for us to live our ‘call to discipleship’.

Please refer to their website for times more information [\*hoodrivercares.org\*](http://hoodrivercares.org)

Email our volunteer coordinator, [\*hoodriverws@gmail.com\*](mailto:hoodriverws@gmail.com) and we'll let you know when and where our next scheduled volunteer orientation will be.

Shelter Phone (6pm-7am - when shelter is open): (541) 399-2249 P.O. Box 656 Hood River, OR 97031

**Checks can be made out to HRWS and mailed to the address above. We do not accept clothing or food donations.**

Give in Love, Serve our Lord.

# December 2013

SUN	MON	TUE	WED	THU	FRI	SAT
<p>1 9am Trad. Worship 10am Fellowship 10:30am Celebration Worship</p>	<p>2 9am Happy Hands</p>	<p>3 10am Men's Coffee @ Rosauers  5:15pm Ukulele class 6:15pm Bell Choir</p>	<p>4 9am WELCA Quilting</p>	<p>5 11am GEM  4:30pm Celebration Service practice 6pm Choir Practice</p>	<p>6 <b>Holiday Bazaar</b> 10am-7pm    10am-3pm</p>	
<p>8 10am Worship 11 Coffee Hour 11:30 Elections of Board and Committee members</p>	<p>9 9am Happy Hands</p>	<p>10 10am Men's Coffee @ Rosauers 5:15pm Ukulele class 6:15pm Bell Choir 6:30 ORLC council</p>	<p>11</p>	<p>12  4:30pm Celebration Service practice 6pm Choir Practice</p>	<p>13</p>	<p>14</p>
<p>15 9am Trad. Worship 10am Fellowship 10:30am Celebration Worship</p>	<p>16 9am Happy Hands</p>	<p>17 10am Men's Coffee @ Rosauers 2pm WELCA Bible Study 5:15pm Ukulele class 6:15pm Bell Choir</p>	<p>18 9am WELCA Quilting</p>	<p>19  4:30pm Celebration Service practice 6pm Choir Practice</p>	<p>20  LAMP Newsletter items due</p>	<p>21 8am Men's Breakfast @ Charburger</p>
<p>22 Food on the 4th 9am Trad. Worship 10am Fellowship 10:30am Celebration Worship</p>	<p>23 9am Happy Hands</p>	<p>24 10am Men's Coffee @ Rosauers</p>	<p>25 </p>	<p>26</p>	<p>27</p>	<p>28</p>
<p>29 9am Trad. Worship 10:30am Celebration Worship 12:00 Partnership Celebration</p>	<p>30 9am Happy Hands</p>	<p>31 10am Men's Coffee @ Rosauers</p>				



.....  
: January Newsletter submissions :  
:

Due: December 21, 2013  
:



**ORLC & AUMC**

**Partnership**

1140 Tucker Road

Hood River, Oregon 97031

Phone: 541-386-3993

E-mail: [orlc@gorge.net](mailto:orlc@gorge.net)

[office@hraumc.org](mailto:office@hraumc.org)

[www.lutheranchurchhoodriver.org](http://www.lutheranchurchhoodriver.org)

[www.hraumc.org](http://www.hraumc.org)